



53208 Thrust ball bearings, single direction

- Popular item

Thrust ball bearings, single direction

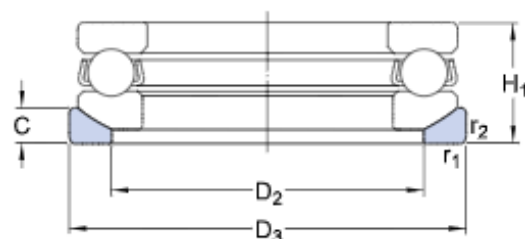
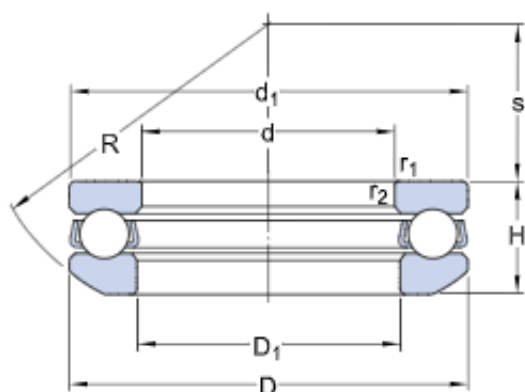
Bearing data

[Tolerances,](#)
table 1

Bearing interfaces

[Seat tolerances for standard](#)
[conditions,](#)
[Tolerances and resultant fit](#)

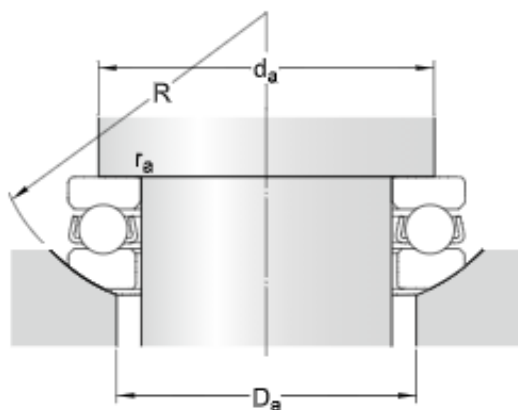
Technical specification



DIMENSIONS

d	40 mm	Bore diameter
D	68 mm	Outside diameter
H	20.3 mm	Height
H ₁	23 mm	Height bearing including seat washer
d ₁	≈ 68 mm	Outside diameter shaft washer
D ₁	≈ 42 mm	Inner diameter housing washer
D ₂	55 mm	Inner diameter sphered seat washer
D ₃	72 mm	Outside diameter sphered housing washer
C	7 mm	Height sphered housing washer
R	56 mm	Radius sphered housing washer
s	28.5 mm	Centre height housing washer sphere
r _{1,2}	min. 1 mm	Chamfer dimension washer

ABUTMENT DIMENSIONS



d_a min. 57 mm	Abutment diameter shaft
D_a max. 55 mm	Abutment diameter housing
r_a max. 1 mm	Fillet radius



CALCULATION DATA

C	44.2 kN	Basic dynamic load rating
C_0	96.5 kN	Basic static load rating
P_u	3.6 kN	Fatigue load limit
	3 600 r/min	Reference speed
	5 300 r/min	Limiting speed
A	0.058	Minimum load factor

MASS

0.35 kg	Mass bearing (including seat washer where applicable)
---------	---

ASSOCIATED PRODUCTS